

Trowbridge Elementary

March Highlights



We've officially made it to March! That means spring is right around the corner, and the excitement can be felt throughout our building.

Just think: warmer recess days, classrooms filled with sunshine, and finally being able to ditch those bulky winter coats! We've got so much to look forward to!

Before we get to enjoy a well-deserved Spring Break, let's put in some extra effort with our studies and responsibilities. We'll feel so accomplished and ready for some relaxing time off.

Let's work together, have some fun, and make the most of these next few weeks as we head towards break and the end of the year! We've got this!

Sincerely, Trowbridge Staff

Upcoming Events

**March 11
& 18**

**Parent-Teacher
Conferences**

**March
21 - 28**

Spring Break

We appreciate your patience as we adjust to our new (temporary) home. We are grateful for the staff of W.C.L.L. for welcoming us into their school and treating us with the utmost graciousness and hospitality.

We know this has been an adjustment for students (and us adults, too!) but you all have shown resilience and positivity and we are proud to be part of such great community.

We will update families as we get information. So please be patient.





where's the bus?

WheresTheBus App lets families know precisely when a child's bus will arrive at the bus stop. The app tracks the location of the bus and provides up-to-the-minute arrival times.

The app is free and can be accessed from any Internet-enabled device—smartphone, tablet, PC, or iPad. Apple iOS and Android apps are available.

This app will give families peace of mind by knowing where the bus is. Tracking the bus means students and families can wait in the comfort of home rather than standing outside in bad weather.

To access WheresTheBus, a parent/guardian must have a Campus Parent (parent portal) account with a login and password.

Campus Parent accounts can be set up in one of two ways:

At a child's school during regular school hours; an ID is required.

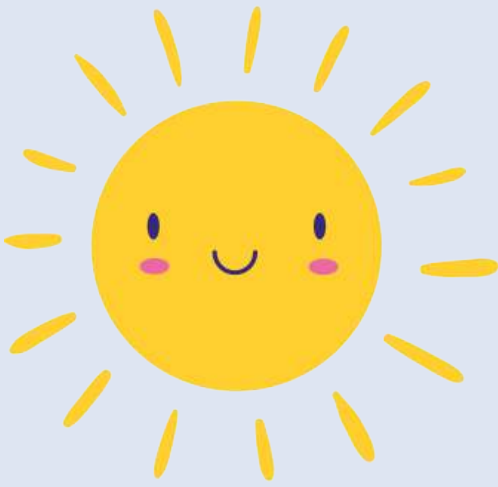
At MPS Central Services, 5225 W. Vliet St., Milwaukee, WI 53208, Monday through Friday from 9:00 a.m. to 5:00 p.m.; an ID is required.



where's the bus?

Families will need to follow these steps to get started:

- 1) Log in to Campus Parent.
- 2) Search for WheresTheBus.
- 3) Click on the WheresTheBus icon.
- 4) Download the app from the App Store (iOS/Apple) or Google Play (Android).
- 5) Log in with your Campus Parent ID and password to open the app and see bus information.



Summer Academy

Learn more about the FUN, SAFE,
and EXCITING programs that MPS
has to offer this summer!

Click Here!



Do you need help deciding what age is appropriate for your child; movies, games, books, apps, etc? Check out this site.

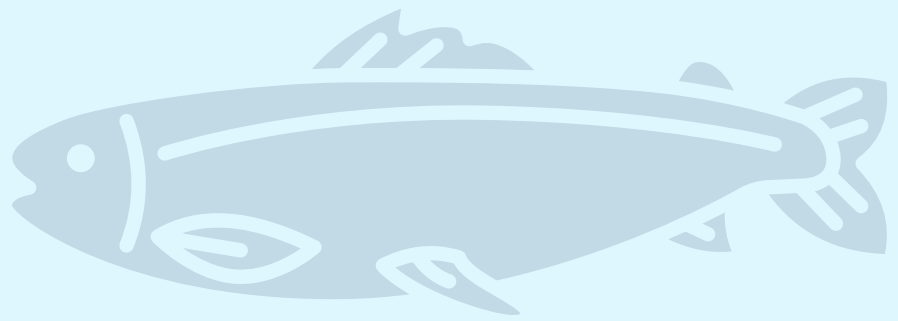
<https://www.common sense media.org/>



We're looking for ways to improve parent/caretaker communication in our school. Please take this short survey to help our community grow!

Family Engagement Survey





TROWBRIDGE SEC MEETING

Wednesday, March 12th at
2:45pm

Where: School Library, 2nd floor
or

Google Meet

Bring your ideas
and suggestions!

RSVP here





MILWAUKEE
PUBLIC SCHOOLS

Parents/Guardians Survey

Share valuable input, feedback, and suggestions

MPS parents and guardians play a vital role in student success. We want to understand how best to support you to improve family and community engagement — your opinion is important to us. The survey will provide MPS with important information, including the best ways to communicate with families and how to better understand key aspects of family/school relationships.

Survey Facts

- Q** The survey takes about 5 minutes to fill out.
- W** The survey is available at: mpsmke.com/spcssurvey.
- €** The survey is available in English, Arabic, French, Hmong, Kiswahili, Rohingya, Somali, and Spanish.
- R** We encourage each adult in the household to take the survey.
- T** The survey is confidential. Names or other identifiers will not be used.
- Y** Schools will receive a copy of their survey feedback.

How will responses be used?

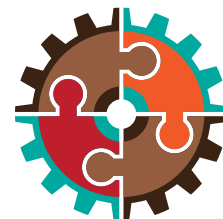
Survey responses will be used to:

- I** Understand how families access school resources
- I** Identify areas and opportunities for improvement
- I** Guide planning for school events and activities
- I** Inform best practices to expand and enhance academic success

Deadline: October 31, 2024. Please contact your child’s school with questions.

Take the survey!

- Q** Online at: mpsmke.com/spcssurvey
- W** At your child’s school
- €** Ask for a paper copy from your child’s school.



**STRATEGIC
PARTNERSHIPS
& CUSTOMER SERVICE**