

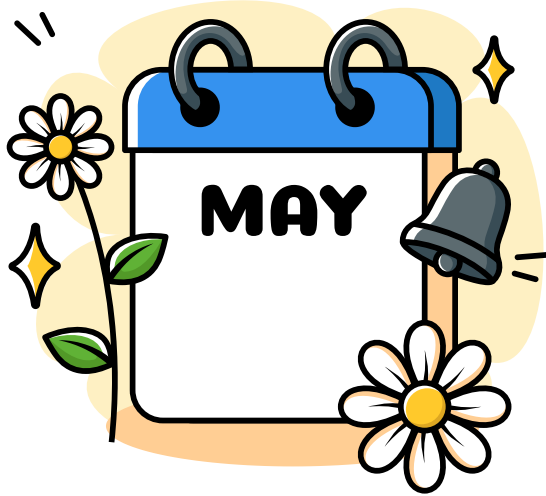


**MILWAUKEE  
PUBLIC SCHOOLS**

# HEADS UP NEWSLETTER



APRIL 29, 2026



Individualized,  
Developmental, Educational  
Approaches to Learning  
School

414-267-1600  
224@milwaukee.k12.wi.us

[mpsmke.com/ideal](http://mpsmke.com/ideal)

## Important Dates:

**\*\*\*April 30<sup>th</sup> is NOW A SCHOOL DAY (Make-up day from snow day earlier)**

**\*\*\*May 1st---NO SCHOOL**

**\*\*\*May 6th---PTA Panera Fundraiser Night**

**\*\*\*May 6th---Afterschool Family Fun Night 4:30 to 6 PM**

**\*\*\*May 7th---ABC Countdown to Summer begins**

**\*\*\*May 12th---Art Showcase Night**

**\*\*\*May 15th---Piano Recital @ 2:00 PM**

**\*\*\*May 29<sup>th</sup> ----Band Concert @ 2:30 PM**

**\*\*\*May 25th---NO SCHOOL- Memorial Day**

**\*\*\*June 5th---NO SCHOOL**

**\*\*\*June 15<sup>th</sup> Last Day of School**

**\*\*\*June 15<sup>th</sup> --- 8<sup>th</sup> Grade Completion Program @ 3 PM at Audubon School**

*\*\*Reminder: Our school day ends at 4:10 PM, we are experiencing an excessive amount of requests for early pickups daily which are causing significant disruptions to the learning environment. These early requests are also impacting our daily attendance rate. In many cases it seems to be becoming more of a habit vs necessity. Please help us reduce the early pick-ups (appointments, etc are a different matter). We appreciate your attention to this very important school matter.*

### **Snack Sales:**

The snack sales will be held this week on Thursday (no school Friday). The nacho sales will resume next week.

### **Primary Unit: Grades K4 thru 2:**

\*Primary students have just completed their Aimsweb assessments and showed great focus and effort.

\*K5 students are diving into our “Zoom In” unit, where students are learning how to look closely and think carefully about what they notice and discover.

\*Upper Primary students are wrapping up their Human Growth and development unit this week, building their understanding of how our bodies grow and change over time.

### **Elementary Unit: Grades 3 thru 5**

\*\* All grade levels are currently learning about fractions in math class. Fractions are all around us and opportunities for real life learning can help support the instruction taking place in the classroom! Some examples of everyday fractions include:

- Splitting a bill at a restaurant into halves, thirds or quarters.
- Working out price comparisons in the grocery store when something is half price.
- Figuring out amounts in the kitchen, for example a recipe could serve 10 people but there are only 4 eating, and this means you’ll need fractions to figure out the correct amount.
- Adding up monetary amounts.
- Looking at time! Half an hour and quarter past are both common things to hear where time is concerned!

\* A reminder that all 5th grade Jr. Docent art projects are due Friday, May 8th. The students continue to work hard on their presentations in school. Wednesday, May 20th is fast approaching. We hope you are able to join us at the Milwaukee Art Museum to listen to the 5th graders’ presentations!

### **Bus Information:**

**Route 510 - Lamers South**  
414-282-3566

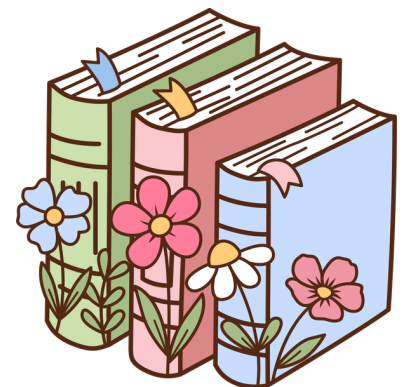
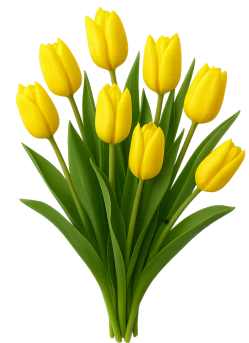
**Route 283 - WI Central**  
West 414-246-5759

**Route 284 - WI Central**  
East 414-481-1000

**Route 285 - WI Central**  
East 414-281-1000

**Route 5300 - Adroit 888-**  
778-3413

**Route 2099 - WI Central**  
West 414-279-9150



## **Middle School Unit: Grades 6 thru 8:**

### **History Highlights: From the Dust Bowl to the Front Lines**

It has been an incredibly busy and productive few weeks in Middle School! As we wrap up our unit on The Great Depression, our students haven't just been reading about the 1930s—they've been living them.

#### **Hard Times & Sweet Rewards**

To understand the resourcefulness of families during the Depression, we explored "Depression-era cooking." Students had the chance to bake (and taste!) Wacky Cake. This recipe is a perfect historical artifact: it uses no eggs, butter, or milk, ingredients that were often too expensive or unavailable during the era. It turns out that a little vinegar and baking soda can still make a pretty delicious treat!

#### **The Journey of a Thousand Miles**

Our school transformed into a rail yard last week as we ran a Great Depression Train Simulation. Students "hopped the rails," navigating the challenges, dangers, and uncertainty faced by thousands of displaced Americans during the 1930s.

Students used their experiences from this simulation to craft a multi-paragraph narrative, writing from the perspective of someone searching for a better life during the Dust Bowl. This writing was due last week Thursday.

#### **Common Core Standards Addressed:**

- CCSS.ELA-LITERACY.WHST.6-8.3: Write narratives to develop real or imagined experiences or events using effective technique, relevant descriptive details, and well-structured event sequences.
- CCSS.ELA-LITERACY.RH.6-8.7: Integrate visual information (e.g., in charts, graphs, photographs, videos, or maps) with other information in print and digital texts.

#### **Looking Ahead: World War II**

We are now shifting our focus to the global stage as we begin our in-depth study of World War II. Over the coming weeks, we will examine the causes of the conflict, the home front efforts, and the monumental turning points that shaped the modern world.

#### **Important Reminder for 8th Grade Parents!**

We are beginning preparations for the end-of-year completion video! We want to celebrate every student's journey.

**Action Required: Please email one baby or toddler picture of your student to Mr. Schroeder at [schroedc@milwaukee.k12.wi.us](mailto:schroedc@milwaukee.k12.wi.us)**

#### **Sports:**

Soccer game this Saturday at 12:00 pm vs Kagel. Good luck this weekend.



***8th Grade Families: Mark your calendars!!!!***  
***The 2026 8<sup>th</sup> Grade Completion Program is Monday, June 15<sup>th</sup>, 2026***  
***3:00 p.m. at the Audubon School Auditorium***  
***(39<sup>th</sup> & Morgan Avenue)***

*Be Safe! Be Respectful! Be Responsible!*

*IDEAL School will ensure the healthy development and high academic success of all students through our unique multi-age program.*

NONDISCRIMINATION NOTICE: The Milwaukee Public Schools does not discriminate in its programs, activities, facilities, employment, or educational opportunities on the basis of a person's sex, race, religion, national origin, ancestry, creed, pregnancy, marital or parental status, sexual orientation or disability.