

# **Thanksgiving Break**



**Due to our Professional Development  
Days & Thanksgiving Break,**

**There will be NO SCHOOL**

***Monday, November 24, 2025***

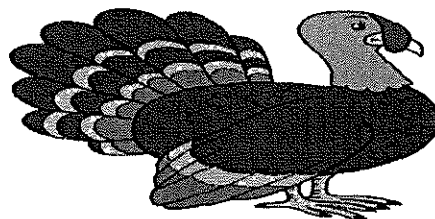
***to***

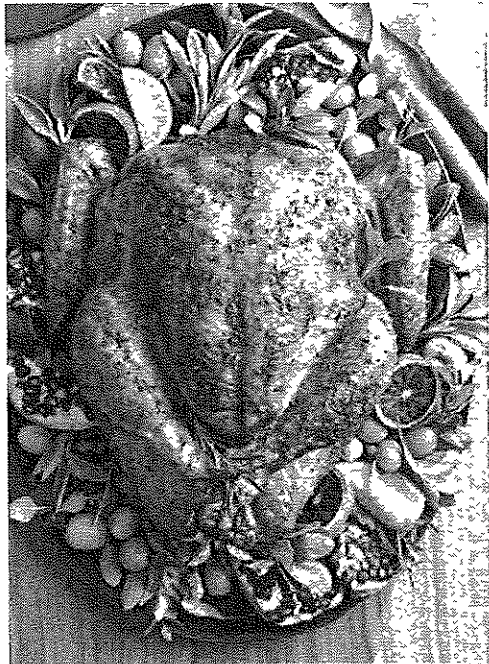
***Friday, November 28, 2025***

**School will resume on**

***Monday, December 1, 2025***

**Enjoy your time with friends and family!**





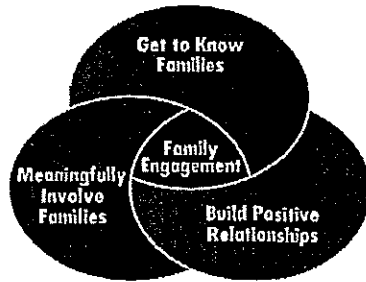
# BRENTWOOD CHURCH OF CHRIST

Location: 6425 N 60<sup>th</sup> St.  
Friday - November 21, 2025  
2:00 pm - while supplies last

## Holiday Turkey & Groceries Giveaway



Questions contact: 414-353-6757



**Please plan to join us for the**  
**Our November**  
**School Engagement Council**  
**(SEC) Meeting**  
**on**  
**Thursday, November 20, 2025**  
**3:30 – 4:30 p.m.**



# THANKSGIVING MEAL GIVEAWAY

Saturday, November 22, 2025 1:30pm

**AT GEE'S CLIPPERS**  
2200 N. DR. MARTIN LUTHER KING JR. DRIVE  
MILWAUKEE, WI 53212

WE'LL BE GIVING AWAY 500 TURKEYS, HAMS AND  
ALL THE SIDES TO MAKE YOUR HOLIDAY COMPLETE!

FIRST COME FIRST SERVED!

SPONSORED BY:

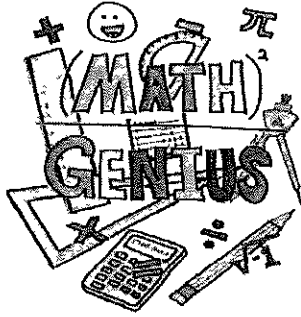


Greater Milwaukee  
Urban League

Empowering Communities  
Changing Lives.



GEE'S CLIPPERS - GEE'S MKE FOUNDATION - DARVIN AND DENEITRA HAM  
GREATER MILWAUKEE URBAN LEAGUE - FEEDING AMERICA



# Harvest Math Night

Engleburg Elementary School in partnership  
with our

**Boy's & Girl's Club CLC will host a**  
**Math Night**



**All families are encouraged to join us to learn  
fun ways to help enhance your child's math  
skills at home. The event will be held at  
Engleburg School in the gym on  
Thursday, November 20, 2025,  
from 3:00-5:30 p.m.**

**All parents who attend will receive educational  
supplies and games to help you support your  
child's learning at home.**

---



# Halal turkey Drive-Thru Giveaway!

NOVEMBER 22<sup>ND</sup>

---

SAT. 11AM-1PM



AT 5000 W. ELECTRIC AVE.,  
WEST MILWAUKEE, WI, 53219

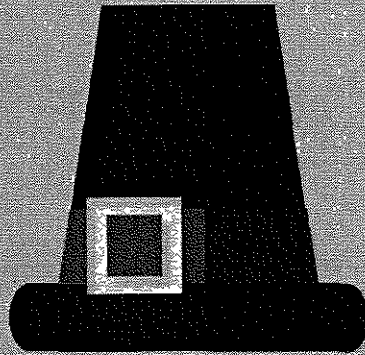
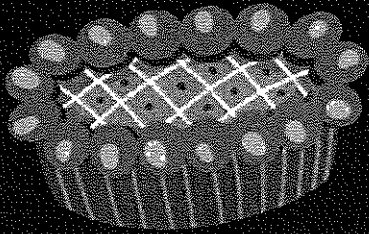


REGISTER

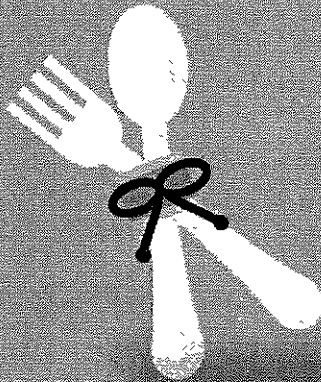


VOLUNTEER

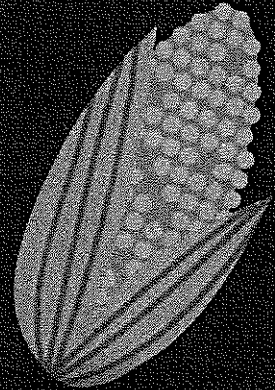
The Dr. Martin Luther, Jr. Community Center Presents  
MAKE A FAMILY SMILE 2025



# Turkey GIVEAWAY & DINNER



MADE POSSIBLE ANNUALLY BY  
**CHRIS ABELE**



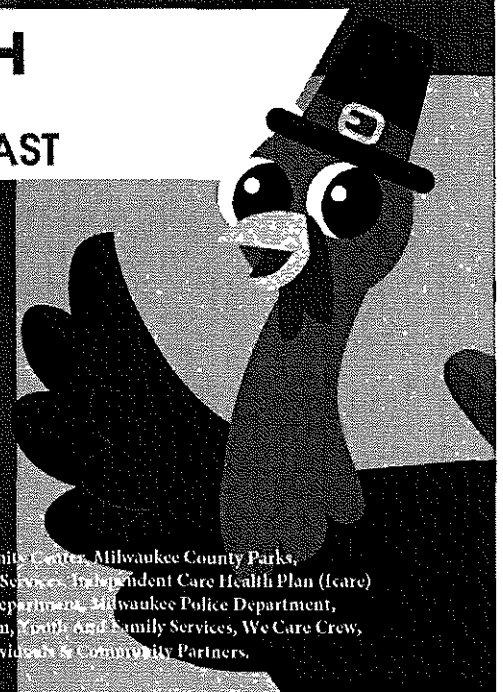
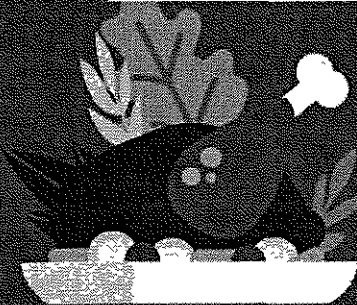
**NOVEMBER 24TH**

**TURKEY GIVEAWAY  
9:00 AM - WHILE SUPPLIES LAST**

**1 TURKEY PER HOUSEHOLD**

**DRIVE UP ONLY**  
MUST REMAIN IN VEHICLE  
NO WALK UPS

**Dr. Martin Luther King, Jr.  
Community Center  
1531 W. Vliet St.  
Milwaukee, WI, 53205**



Special Thanks To Our Supporters And Donors, Chris Abele, Dr. Martin L. King Jr. Community Center, Milwaukee County Parks, Milwaukee County Department Of Health & Human Services, Milwaukee County Aging & Disabilities Services, Independent Care Health Plan (Icare) Inclusa, City Of Milwaukee Office Of Community Wellness & Safety, Milwaukee County Sheriff Department, Milwaukee Police Department, Milwaukee County Employees, King Cares Mke, Inc., King Advisory, Inc., Milwaukee County Children, Youth And Family Services, We Care Crew, Pick & Save, Turner Hall, Walmart, Feeding America, and Several Other Agencies, Individuals & Community Partners.

# Happy Thanksgiving

YOU ARE INVITED TO COME INSIDE FROM THE OUTDOORS,  
SIT DOWN, FELLOWSHIP, AND ENJOY  
A HOT, DELICIOUS, FREE THANKSGIVING MEAL!

JOIN US ON AT ONE OF OUR TWO LOCATIONS ON  
MONDAY, NOVEMBER 24, 2025  
FROM 3:00 PM TO 4:30 PM

North Side

King Center

1531 West Vliet St



South Side

St. Vincent De Paul

931 W. Madison St

Stop by our community resource tables to learn about helpful programs and services available to attendees!

Special Thanks To Our Supporters And Donors, Chris Abele, Dr. Martin L. King Jr. Community Center, Milwaukee County Parks, Milwaukee County Department Of Health & Human Services, Milwaukee County Aging & Disabilities Services, Independent Care Health Plan (Icare) Inclusa, City Of Milwaukee Office Of Community Wellness & Safety, Milwaukee County Sheriff Department, Milwaukee Police Department, Milwaukee County Employees, King Cares MKE, Inc., King Advisory, Inc., Milwaukee County Children, Youth And Family Services, We Care Crew, Pick & Save, Turner Hall, Walmart, Feeding America, and Several Other Agencies, Individuals & Community Partners

# Amani

## THANKS GROCERY GIVEAWAY

### TUESDAY, NOV. 25, 12-2PM DOMINICAN CENTER, 2470 W. LOCUST ST.

#### WHAT IS IT?

Amani families can pick up a box filled with all the fixings from Feeding America Eastern Wisc., resources and information from neighborhood partners, diapers and hygiene supplies & more!

#### SERVING AMANI FAMILIES

- To get a free food box you must live in the 53206 zip code. **Bring proof of address (ID or a piece mail)**
- 1 box per household and a person from each household needs to come in-person to pick up their box

*\*\*\*First-come, first-served up to 100 boxes; on-site registration required. Drive-up service with a walk-up option. Park your vehicle to gather resources from partners.*

For more info, contact DC at 414.444.9930 or [info@dominican-center.org](mailto:info@dominican-center.org)



**WE NEED HELP!**  
To volunteer OR vend,  
scan the QR code!

**DC**  
DOMINICAN CENTER

**AMANI**  
UNITED

**FEEDING**  
**AMERICA**  
Eastern Wisconsin